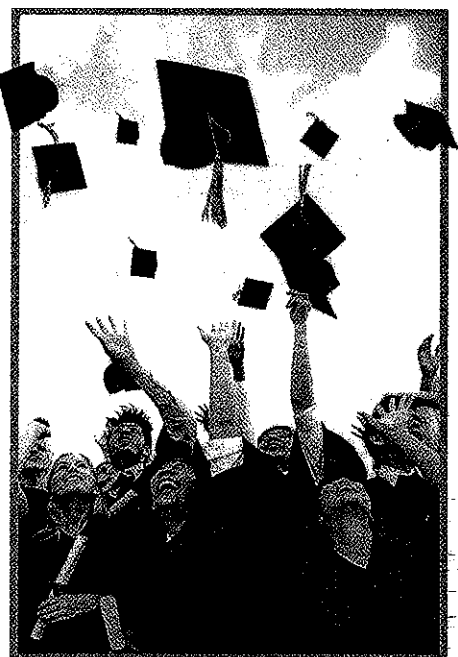


# DROPOUT PREVENTION



C. LEE GOSS  
KRISTINA J. ANDREN

**APPENDIX D**

**Evidence-Based Interventions**

Behavior Interventions	Contact Information	Cost	Materials	Applicable Grade Levels
Check-In, Check-Out (CICO)	<a href="http://www.pbis.org/common/pbisresources/presentations/8APBS_Tier2_GettingStartedWorkbook.pdf">www.pbis.org/common/pbisresources/presentations/8APBS_Tier2_GettingStartedWorkbook.pdf</a>	Free	Training is available. Produce your own materials.	Elementary and Secondary
Check and Connect	<a href="http://checkandconnect.umn.edu">checkandconnect.umn.edu</a>	Free	Training is available. No specific materials are required.	Secondary
PATHS	<a href="http://www.channing-bete.com/prevention-programs/paths/paths.html">www.channing-bete.com/prevention-programs/paths/paths.html</a>	Packages start at \$350	Training is available. Materials are included with the purchased program.	Elementary
Skillstreaming the Elementary School Child	<a href="http://www.skillstreaming.com">www.skillstreaming.com</a>	Packages start at \$79.95	Training is available. Materials are included with the purchased program.	Elementary
Skillstreaming the Adolescent	<a href="http://www.skillstreaming.com">www.skillstreaming.com</a>	Packages start at \$79.95	Training is available. Materials are included with the purchased program.	Secondary
Coping Cat	<a href="http://www.workbookpublishing.com">www.workbookpublishing.com</a>	Workbooks start at \$24	Training is available. Materials are included with the purchased program.	Elementary and Secondary
Second Step	<a href="http://www.secondstep.org">www.secondstep.org</a>	Kits start at \$189	Training is available. Materials are included with the purchased program.	PreK-9

(continued)

From C. Lee Goss and Kristina J. Andren (2014). Copyright by The Guilford Press. Permission to photocopy this material is granted to purchasers of this book for personal use only (see copyright page for details). Purchasers can download additional copies of this material from [www.guilford.com/goss-forms](http://www.guilford.com/goss-forms).

Evidence-Based Interventions (page 2 of 4)

Reading	Contact Information	Cost	Materials	Applicable Grade Levels
Reading Mastery	<a href="http://www.mcgraw-hill.co.uk/sra/readingmastery.htm">www.mcgraw-hill.co.uk/sra/readingmastery.htm</a>	Quotes available based on materials	Training is available. Materials are included with the purchased program.	Elementary
Early Interventions in Reading 2012	<a href="http://www.weareteachers.com/lessons-resources/details/sra-early-interventions-in-reading">www.weareteachers.com/lessons-resources/details/sra-early-interventions-in-reading</a>	Quotes available based on materials	Training is available. Materials are included with the purchased program.	Grades K, 1, and 2
Corrective Reading Program	<a href="http://www.mcgraw-hill.co.uk/sra/correctivereading.htm">www.mcgraw-hill.co.uk/sra/correctivereading.htm</a>	Quotes available based on materials	Training is available. Materials are included with the purchased program.	Grades 4-12
READ 180	<a href="http://read180.scholastic.com/reading-intervention-program">read180.scholastic.com/reading-intervention-program</a>	Quotes available based on materials	Training is available. Materials are included with the purchased program.	Grades 4-12
Scott Foresman Early Reading Intervention	<a href="http://www.scottforesman.com/reading/eril/index.cfm?slide=7">www.scottforesman.com/reading/eril/index.cfm?slide=7</a>	Quotes available based on materials	Training is available. Materials are included with the purchased program.	Elementary
PALS Reading (Peer-Assisted Learning Strategies)	<a href="http://kc.vanderbilt.edu/pals/">kc.vanderbilt.edu/pals/</a>	Packages start at \$40	Training is available. Materials are included with the purchased program.	Elementary
<b>Phonological Awareness and Word Analysis</b>				
Lexia Reading	<a href="http://www.lexialearning.co.nz/reading.html">www.lexialearning.co.nz/reading.html</a>	Quotes available based on materials	Training is available. Materials are included with the purchased program.	Ages 4 to adult
Phoneme Segmentation	<a href="http://www.bemidji.k12.mn.us/Curriculum/documents/PhonemeSegmentationInterventionStrategy.pdf">www.bemidji.k12.mn.us/Curriculum/documents/PhonemeSegmentationInterventionStrategy.pdf</a>	Free	Materials are listed in the intervention.	Elementary
Phonological Awareness Training (PAT)	<a href="http://www.ucl.ac.uk/educational-psychology/cpd/pat.htm">www.ucl.ac.uk/educational-psychology/cpd/pat.htm</a>	Packets range from \$25-\$30	Materials are included with the purchased program.	Elementary

(continued)

Evidence-Based Interventions (page 3 of 4)

<b>Fluency</b>							
Partner Reading (PR)	<a href="http://www.readingrockets.org/strategies/partner_reading">www.readingrockets.org/strategies/partner_reading</a>	Free	Reading Passage Partners	Elementary and Secondary			
Quick Reads	<a href="http://www.rti4success.org">www.rti4success.org</a>	Free	Reading Passage	Elementary and Secondary			
Repeated Reading	<a href="http://www.interventioncentral.com">www.interventioncentral.com</a>	Free	Reading Passage Timer	Elementary and Secondary			
Listening Passage Preview (LPP)	<a href="http://www.interventioncentral.com">www.interventioncentral.com</a>	Free	Reading Passage Timer	Elementary and Secondary			
Great Leaps	<a href="http://www.greatleaps.com">www.greatleaps.com</a>	Packages range from \$60 to \$160	Materials are included with the purchased program.	Elementary and Secondary			
Helping with Early Literacy with Practice Strategies (HELPS)	<a href="http://www.helpsprogram.org">www.helpsprogram.org</a>	Depends on materials used	Depends on strategies used	Elementary and Secondary			
Read Naturally	<a href="http://www.readnaturally.com">www.readnaturally.com</a>	Depends on materials purchased	Materials are included with the purchased program.	Elementary			
<b>Comprehension</b>							
Collaborative Strategic Reading (CSR)	<a href="http://www.sedl.org/cgi-bin/mysql/buildingreading.cgi?showrecord=15">www.sedl.org/cgi-bin/mysql/buildingreading.cgi?showrecord=15</a>	Free	Depends on strategies used	Elementary and Secondary			
"Get the Gist"	<a href="http://www.interventioncentral.com">www.interventioncentral.com</a>	Free	Reading passage	Elementary and Secondary			
Story Mapping	<a href="http://www.interventioncentral.com">www.interventioncentral.com</a>	Free	Reading materials	Elementary and Secondary			

(continued)

Evidence-Based Interventions (page 4 of 4)

Math	Contact Information	Cost	Materials	Applicable Grade Levels
Time Practice, Practice, Practice	<i>RTI in the Classroom</i> (Brown-Chidsey, Bronaugh, & McGraw, 2009)	Free	Computation problems Timer Graph paper	Elementary and Secondary
Flashcards and Folding in New Items	<i>RTI in the Classroom</i> (Brown-Chidsey, Bronaugh, & McGraw, 2009)	Free	Blank 3 x 5 index cards Math computation problems Markers	Elementary and Secondary
Cover Copy Compare (CCC)	<a href="http://www.interventioncentral.com">www.interventioncentral.com</a>	Free	Computation problems Pencil	Elementary and Secondary
Peer-Assisted Learning Strategies (PALS)	<a href="http://kc.vanderbilt.edu/pals">kc.vanderbilt.edu/pals</a>	Packages start at \$40 for teacher manual and \$30 for student materials	Training is available. Materials are included with the purchased program.	Elementary
Accelerated Math	<a href="http://www.relearn.com/am">www.relearn.com/am</a>	Quotes available for specific school needs	Training is available. Materials are included with the purchased program.	Elementary and Secondary
Reciprocal Peer Tutoring in Math	<i>Effective School Interventions</i> (Rathvon, 2008)	Free	Computation problems Pencil	Elementary and Secondary
Great Leaps Math	<a href="http://www.greatleaps.com">www.greatleaps.com</a>	Packages range from \$25 to \$275	Materials are included with the purchased program.	Elementary and Secondary

## APPENDIX E

### Online Resources for Dropout Prevention and Intervention Methods

American Institutes for Research: Early Warning Systems in Education  
[www.earlywarningsystems.org](http://www.earlywarningsystems.org)

Blueprints for Healthy Youth Development  
[www.blueprintprogram.com](http://www.blueprintprogram.com)

Center on Instruction  
[www.centeroninstruction.org](http://www.centeroninstruction.org)

Florida Center for Reading Research  
[www.fcrr.org](http://www.fcrr.org)

Free Reading  
[www.freereading.net](http://www.freereading.net)

International Reading Association  
[www.reading.org](http://www.reading.org)

Intervention Central  
[www.interventioncentral.com](http://www.interventioncentral.com)

Khan Academy  
[www.khanacademy.org](http://www.khanacademy.org)

Meadows Center for Preventing Educational Risk  
[www.meadowscenter.org](http://www.meadowscenter.org)

National Association of School Psychologists  
[www.nasponline.org](http://www.nasponline.org)

National Center on Intensive Intervention (NCII)  
[www.intensiveintervention.org](http://www.intensiveintervention.org)

National Center for Response to Intervention (NCRTI)  
[www.rti4success](http://www.rti4success.org)

National High School Center  
[www.betterhighschools.org](http://www.betterhighschools.org)

National Mathematics Advisory Panel  
[www.ed.gov/MathPanel](http://www.ed.gov/MathPanel)

National Reading Panel  
[www.nationalreadingpanel.org](http://www.nationalreadingpanel.org)

RTI Action Network  
[www.rtinetwork.org](http://www.rtinetwork.org)

SEDL Advancing Research, Improving Education  
[www.sedl.org](http://www.sedl.org)

Technical Assistance Center on Positive Behavior Intervention and Supports  
[www.pbis.org](http://www.pbis.org)

Webmath  
[www.webmath.com](http://www.webmath.com)

What Works Clearinghouse  
[www.ies.ed.gov/ncee/wwc](http://www.ies.ed.gov/ncee/wwc)